



IDC5 Software Update

OHW 21.0.0

TEXA

**New Software
Features**

**New Diagnosis
Features**

AGRICULTURAL
VEHICLES

CONSTRUCTION
VEHICLES &
SPECIAL VEHICLES

FORKLIFTS &
TELEHANDLERS

WIRING DIAGRAMS

DASHBOARD

**OHW TECHNICAL
DATA SHEETS**

Coverage of Makes

Link

IDC5 OHW Software update 21.0.0

The new diagnostic features included in the **IDC5 OHW 21.0.0** update, which also contains the continuous updates IDC5 OHW 20.1.0 / 20.2.0 / 20.3.0 / 20.4.0 / 20.5.0 / 20.6.0 / 20.7.0 / 20.8.0 / 20.9.0 / 20.9.1, allow working on a large number of vehicles that belong to makes of the most popular manufacturers.

The work TEXA's developers carried out on agricultural vehicles, forklifts, telehandlers, construction vehicles and special vehicles guarantees all mechanics the opportunity to use diagnostic tools that are always updated and state-of-the-art, to operate successfully on the vast majority of vehicles on the road.

IDC5 OHW contains new possible selections for the major makes worldwide, among which: **ARBOS, ATLAS COPCO, BOBCAT, BOMAG, CASE CE, CASE IH, CATERPILLAR, CHALLENGER, CLAAS, CUMMINS, DEUTZ, DEUTZ – FAHR, DITCH WITCH, DOOSAN, DYNAPAC, ERO, FENDT, FPT, GEHL, GIANT, GREGOIRE, HAMM, HIDROMEK, HINO, HITACHI, HOLMER, HYSTER, HYUNDAI CE, ISUZU, JCB, JOHN DEERE, JOHN DEERE (Brazil), JOHN DEERE CE, KALMAR, KATO, KIOTI, KOBELCO, KUBOTA, LANDINI, LIEBHERR, LINK-BELT, LS MTRON, MASSEY FERGUSON, MASSEY FERGUSON (LATAM), McCORMICK, MERCEDES-BENZ, MERLO, MOW, MTU, MUSTANG by MANITOU, NEW HOLLAND, PERKINS, PRINOTH, RENAULT AGRICULTURE, ROSTSELMASH, SAME, SENNEBOGEN, SISU, SPIERINGS, STEYR, TADANO, UPLIFTING, VALTRA, VALTRA (LATAM), VERMEER, VM, VOLVO CE, WACKER NEUSON, WIRTGEN, XTREME, YANMAR.**

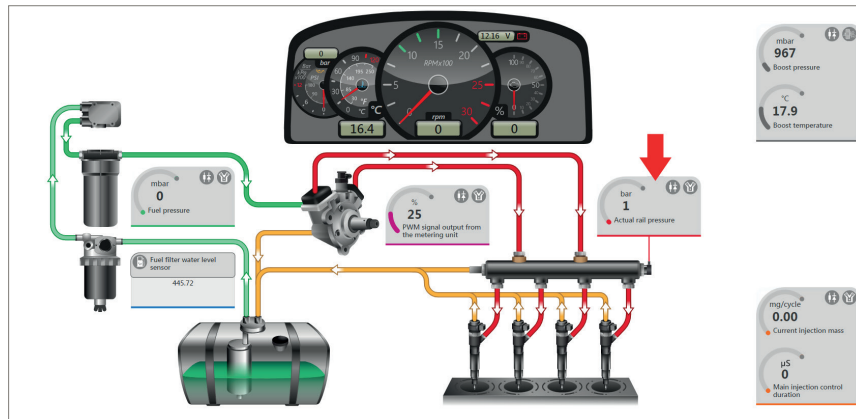
The OHW update 21.0.0 also offers new, very useful Wiring Diagrams and DASHBOARDS.

New Software Features

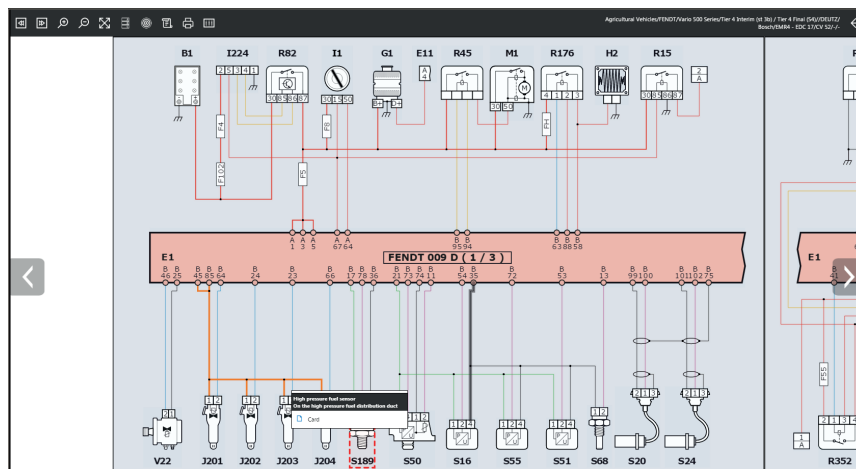
WIRING DIAGRAM LINKS IN THE PARAMETER DASHBOARDS

Starting from the OHW 21 update, a new function is available for some models which allows viewing the wiring diagrams directly from the parameter dashboards.

By clicking on the parameter in the dashboard, you will be redirected to the corresponding wiring diagram.



Dashboard with link to the wiring diagram.

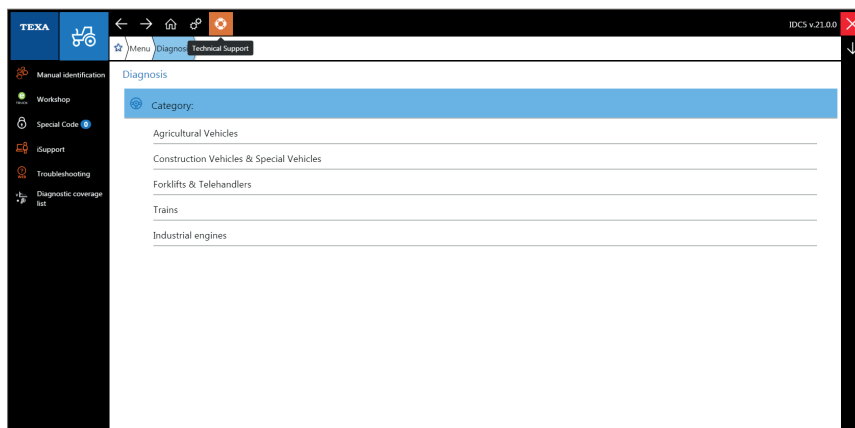


Component highlighted in the diagram.

Technical Support and Advanced Assistance

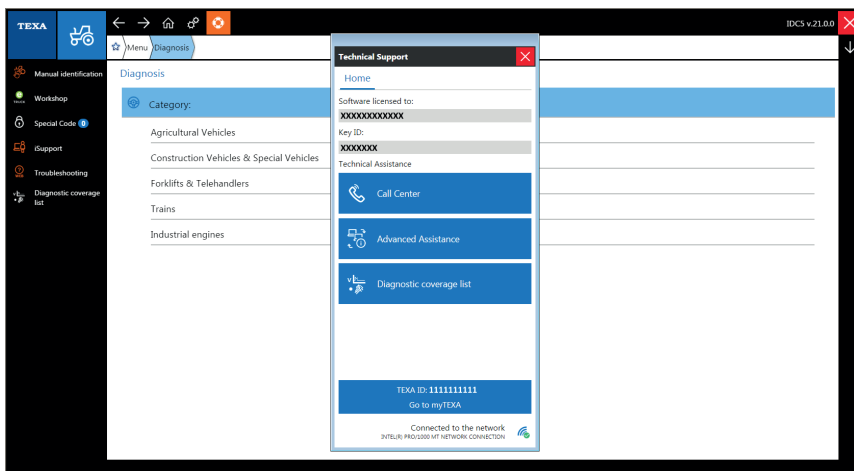
Starting from the OHW 21 update, the functions connected with Technical Support have been enhanced and made more usable thanks to an easier access and a more intuitive consultation menu.

To use these features, simply click on the new icon in the upper IDC5 bar located near the Home icon.

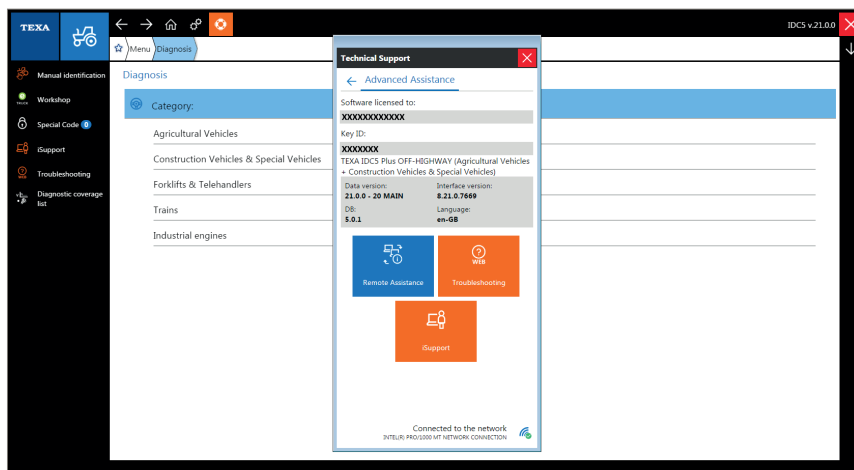


From here you can access the “Technical Support” screen directly; you will find the information needed to ask for assistance such as “Software license holder” and “Key ID”.

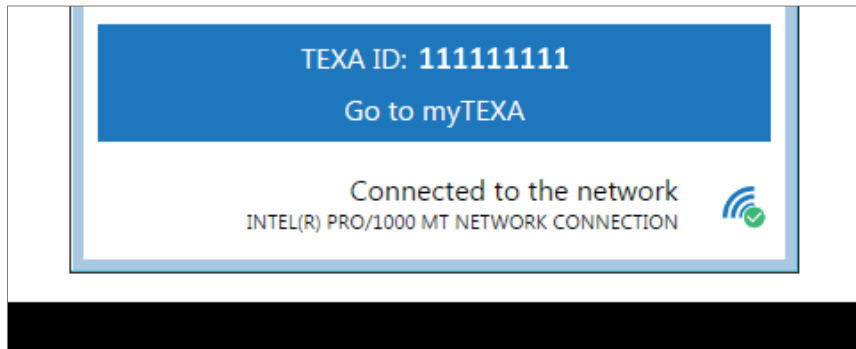
Directly beneath there are 3 buttons to contact the Call Center by phone, request Advanced Assistance, and view the Diagnostic Coverage List that is constantly updated.



By clicking on Advanced Assistance, workshops can request immediate Remote Assistance on their diagnostic tools, see the Solved Problems database or use iSupport.



A fourth button located at the bottom of the screen allows viewing your TEXA ID and using it to access myTEXA, the portal that contains your personal information, the situation of your tools, the status of your subscriptions and active services, and accessing the reserved area DOWNLOAD MANAGER directly.



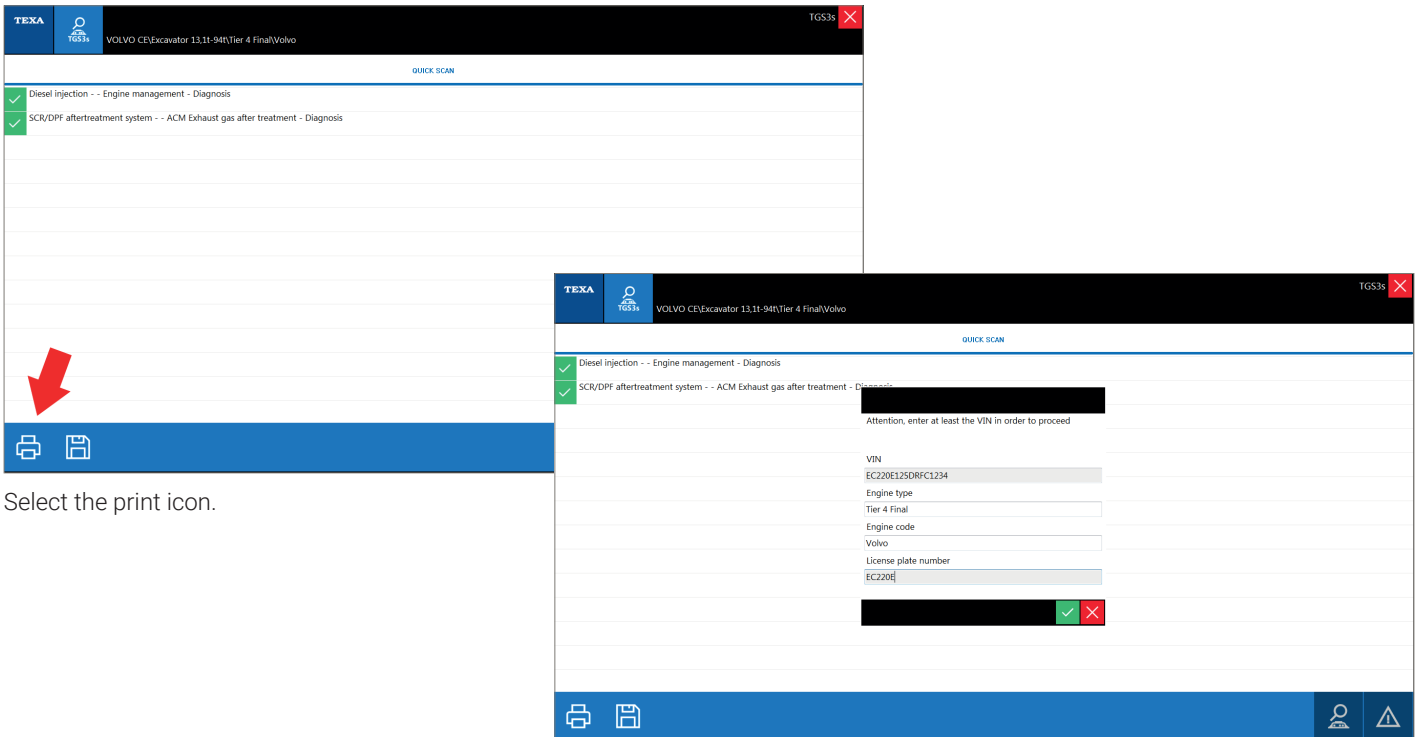
By selecting Connected to the network, you can access some functions whose purpose is to make it easier to connect your TEXA diagnostic tool to the Internet.

The software guides the user through the configuration menus available in the Operating System in order to configure your Workshop network or Smartphone so as to allow TEXA's software programs to communicate with the Internet.

NOTE: To be able to use the above-mentioned functions, you must have an active subscription and verify, with your official TEXA distributor, if the service is available in your country.

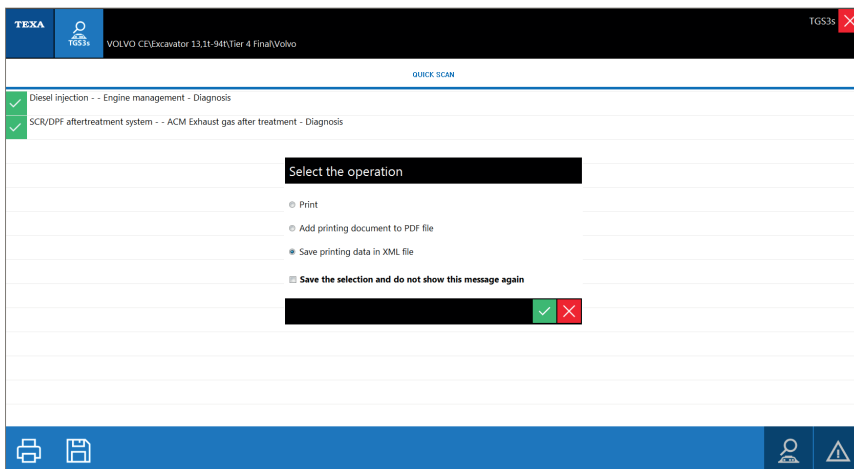
Print report on XML file

This function allows printing or exporting the diagnostic report in XML format.



Select the print icon.

Enter the information required.



Select the format.

New Diagnosis Features

AGRICULTURAL VEHICLES

ARBOS

The “Gateway”, “Diesel Injection” and “SCR/DPF after-treatment” systems have been developed for the following new models:

- FPT tractor;
- KOHLER tractor;
- VM tractor.

CASE IH

All the CASE diagnostic systems in the following models have been updated:

- Optum Series;
- Puma Series;
- Farmall Series;
- Luxxum Series;
- Magnum Series;
- Maxxum Series;
- MX / MXM / MXU Maxxum;
- CS Pro Series;
- CVX;
- JX1U Maxxima;
- Sugar cane harvester;
- MX Magnum;
- Self-propelled Sprayer Trident Series
- Quantum Series;
- Steiger;
- Combine harvester Axial Flow;
- Self-propelled sprayer Patriot Series;
- Titan Series Sprayer;
- Self-propelled shredder CHX.

The Diesel Injection system “Bosch EDC 17 CV 41” has been updated in the following models:

- Farmall Series;
- Sugar cane harvester;
- Magnum Series;
- Maxxum Series;
- Combine harvester Axial Flow;
- Optum Series;
- Self-propelled sprayer Patriot Series;
- Self-propelled Sprayer Trident Series
- Titan Series Sprayer;
- Puma Series;
- Steiger.

The Diesel Injection system “Bosch EDC 17 CV 49” has been updated in the following models:

- Farmall Series;
- Luxxum Series;
- Quantum Series.

CHALLENGER

The “Automatic transmission”, “Diesel Injection”, “Navigation system” and “Enginevehicle adjustment” systems have ben developed for the new models:

- MT 700 D;
- MT 700-800 B;
- MT 700-800 C;
- MT 700-800 E;
- MT 900 C;
- MT 900 E.

CLAAS

The following systems have been developed for the model Arion 600 Series DPS - Tier 4:

- “CMatic”;
- “HYD Hydraulic distributors”;
- “MFA Armrest control unit”;

AGRICULTURAL
VEHICLESCONSTRUCTION
VEHICLES &
SPECIAL VEHICLESFORKLIFTS &
TELEHANDLERS

- “CEBIS terminal”;
 - “VDC Vehicle Drive Control”;
 - “WLP Lights control panel”.
- The “Bosch EDC 17 CV 41 FPT Protocol” Diesel Injection system has been developed for the models:
- Arion 400 Series FPT - Tier 4;
 - Axion 800 Series FPT - Tier 4;
 - Axion 900 Series FPT - Tier 4.
- The “Bosch EDC 17 CV 49 FPT Protocol” Diesel Injection system has been developed for the models:
- Elios 200 Series FPT - Tier 4 Interim;
 - Nexos 200 F / VE / VL Series FPT - Tier 4 Interim.
- The “Suspended axle”, “Power module”, “Air conditioner”, “Special function”, “Automatic transmission” and “Instrumentation” systems have been updated for the models:
- Arion 400 Series;
 - Arion 600 Series;
 - Axion 800 Series.

CUMMINS Motore

The following adjustments for the “Cummins J1939 Core 2 - Proprietary protocol” Diesel Injection system have been developed:

- “Injector coding”;
 - “Idle shutdown - Time before shutdown”;
 - “Idle shutdown - Engine load threshold”.
- New variants for 12-cylinder engines for the “Cummins J1939 Core 2 – Proprietary protocol” Diesel Injection system have been developed.
- New parameterisations for 12-cylinder Cummins QSB engines for the “Cummins J1939 Core 2 - Proprietary protocol” Diesel Injection system have been developed.

DEUTZ Motore

- The Diesel Injection system “Bosch EMR4 EDC 17” has been updated.

OHW TECHNICAL
DATA SHEETS

Coverage of Makes

Link

The following activations for the “Bosch EMR4 EDC 17” Diesel Injection system have been developed:

- “Burner test”;
- “Air pump test”;
- “Pipe venting”.

The following adjustments for the “Bosch EMR4 EDC 17” Diesel Injection system have been developed:

- “DPF (Diesel Particulate Filter) service regeneration”;
- “DPF (Diesel Particulate Filter) regeneration”.
- The Diesel Injection system “Bosch EMR3 EDC 16” has been updated.
- The new model Stage V with the “Bosch MD1” Diesel Injection system has been developed.

ERO

- The new Grape harvester model with the “Bosch EMR4 EDC 17 Tier 4” diesel injection system has been developed.

FENDT

All the diagnostic systems in the following models have been updated:

- Farmer 300 Series;
- Farmer 400 Series;
- Favorit 500 C Series;
- Favorit 700 Series;
- Favorit 800 Series;
- Favorit 900 Series;
- Katana Series;
- Combine harvester C / L / P / X Series;
- Vario 1000 Series;
- Vario 200 Series;
- Vario 300 Series;
- Vario 400 Series;
- Vario 500 Series;
- Vario 700 Series;
- Vario 800 Series;
- Vario 900 Series.

[AGRICULTURAL
VEHICLES](#)[CONSTRUCTION
VEHICLES &
SPECIAL VEHICLES](#)[FORKLIFTS &
TELEHANDLERS](#)

The "ARM Armrest control unit" system has been developed for the models:

- Vario 700 Series;
- Vario 900 Series.

The following systems have been developed for the model Vario 700 Series Tier 4 Interim (st 3b) / Tier 4 Final (S4):

- "Exterior light control unit";
- "Air conditioner";
- "Control panel".

FPT Motore

- The "Bosch EDC 17 C 49" Diesel Injection system has been updated.
- The "Bosch Denoxtronic 2 Pump module replacement - Data transfer with cable T71" SCR/DPF after-treatment system has been updated.

GREGOIRE

- The new Grape and olive harvester model with the "Bosch EMR4 EDC 17 Tier 4" Diesel Injection system has been developed.

HOLMER

The new model Terra Dos T4 has been developed with the following systems:

- "Diesel Injection";
- "Engine-vehicle adjustment";
- "SCR/DPF after-treatment system".

JOHN DEERE

- The "ECU Engine control unit" Diesel Injection system has been updated.
- The new "Global maintenance management" reset system has been developed for the models:
 - 6M Series;
 - 6MC Series;
 - 6RC Series.

The following systems have been developed for the model 5EN (N.A.) Series:

- "EIC Engine Interface Control unit";
- "ICC Instrument Cluster Controller".

[OHW TECHNICAL
DATA SHEETS](#)[Coverage of Makes](#)[Link](#)

The following systems have been updated for the model 5EN (N.A.) Series:

- “OEM Vehicle Check-Up”;
- “PTR Power Train Reverser transmission control unit”.
- The Diesel Injection system “Bosch EDC 17 C 49” has been developed for the 5G Series model.

LANDINI

The “Diesel Injection” systems have been developed for the following new models:

- 5 Series;
- 7000-9000 Series;
- Rex Series DEUTZ;
- Trekker Series.

LS MTRON

The “Automatic transmission”, “Gateway” and “Diesel Injection” systems have been developed for the new models:

- MT5 Series FPT;
- MT5 Series MITSUBISHI.

MASSEY FERGUSON

The following systems have been developed for the model 47xx Series:

- “Automatic transmission”;
- “Linkage control module”.
- The new model 26xxH Series with the “Engine management” Diesel Injection system has been developed.

McCORMICK

The “Diesel Injection” systems have been developed for the following new models:

- X5 Series DEUTZ;
- X6 Series DEUTZ;
- TX4 DEUTZ.

MERCEDES-BENZ Engine

- The “MCM Engine management” Diesel Injection system has been updated.
- The “CPC Powertrain Controller” engine-vehicle adjustment system has been updated.
- The “ACM Exhaust gas after-treatment” SCR/DPF after-treatment system has been updated.

AGRICULTURAL
VEHICLESCONSTRUCTION
VEHICLES &
SPECIAL VEHICLESFORKLIFTS &
TELEHANDLERS**MERLO**

- The Diesel Injection system “Bosch EMR4 EDC 17” has been developed for the new model MMX Series.

NEW HOLLAND

All the NEW HOLLAND diagnostic systems in the following models have been updated:

- Combine harvester CR Series;
- Combine harvester CX series;
- Combine harvester TC Series;
- T4 Series;
- T5 Series;
- T6 Series;
- T7 Series;
- T7000 Series;
- T8 Series;
- T9 Series;
- Self-propelled shredder FR & FX;
- TS Series;
- TS6 Series;
- Grape and Olive harvesters;
- Workmaster Series.

The Diesel Injection system “Bosch EDC 17 CV 41” has been updated in the following models:

- Combine harvester CR Series;
- Combine harvester CX series;
- Combine harvester TC Series;
- T5 Series;
- T6 Series;
- T7 Series;
- T8 Series;
- T9 Series;
- Self-propelled shredder FR & FX;
- TS Series;
- TS6 Series;
- Grape and Olive harvesters.

OHW TECHNICAL
DATA SHEETS

Coverage of Makes

Link

The Diesel Injection system “Bosch EDC 17 CV 49” has been updated in the following models:

- Boomer Series;
- T4 Series;
- T5 Series;
- TK4 Series;
- Workmaster Series.

RENAULT AGRICULTURE

The “Automatic transmission”, “Diesel Injection”, “Rear hydraulic linkage” and “Instrumentation” systems have been developed for the new models:

- Ares 500 Series;
- Ares 800 Series;
- Celtis 400 Series;
- Ceres 300 Series.

ROSTSELMASH

The “Diesel Injection”, “Engine-vehicle adjustment” and “SCR/DPF after-treatment” systems have been developed for the following new models:

- Combine harvester;
- Tractor;
- Shredder.

STEYR

All the STEYR diagnostic systems in the following models have been updated:

- 9000 MT Series;
- CVT;
- Kompakt Series;
- Multi;
- Profi;
- Terrus.

The Diesel Injection system “Bosch EDC 17 CV 41” has been updated in the following models:

- CVT;
- Multi;

[AGRICULTURAL
VEHICLES](#)[CONSTRUCTION
VEHICLES &
SPECIAL VEHICLES](#)[FORKLIFTS &
TELEHANDLERS](#)

- Profi;
- Terrus.

The Diesel Injection system “Bosch EDC 17 CV 49” has been updated in the following models:

- Kompakt Series;
- Multi;
- Profi.

VALTRA

The “TC1 Versu transmission control unit 1” automatic transmission system in the following models has been updated:

- N Series;
- T Series.

The “TC1 Direct transmission control unit 1” automatic transmission system in the following models has been updated:

- N Series.
- T Series;

The “Central Gateway” and “Diesel Injection” systems have been updated for the new model:

- F Series.

CONSTRUCTION VEHICLES & SPECIAL VEHICLES

ATLAS COPCO

The “Diesel Injection” and “SCR/DPF after-treatment” systems have been developed for the following new models:

- CUMMINS Road rollers;
- DEUTZ Road rollers;
- KUBOTA Road rollers.

BOBCAT

- All the diagnostic systems in the model Skid steer Series S & T have been updated.
- The “Bosch ECU Engine control unit 17 CV 51 Tier 4” Diesel Injection system has been updated.

BOMAG

The “Diesel Injection”, “Engine-vehicle adjustment” and “SCR/DPF after-treatment” systems have been developed for the following new models:

- BW Series DEUTZ;
- BW Series KUBOTA;
- BF Series DEUTZ;
- BF Series KUBOTA;
- BF Series PERKINS;
- BC Series DEUTZ;
- BC Series MTU;
- BM Series CATERPILLAR;
- BM Series DEUTZ;
- BM Series MTU;
- RS Series CUMMINS;
- RS Series DEUTZ;
- RS Series MTU.

CASE CE

The new model Loader Series G has been developed with the following systems:

- “Body computer”;
- “Automatic transmission”;

AGRICULTURAL
VEHICLESCONSTRUCTION
VEHICLES &
SPECIAL VEHICLESFORKLIFTS &
TELEHANDLERS

- “Driver side controls”;
- “Multifunction display”;
- “Steering electronics”;
- “Diesel Injection”;
- “Braking system”.

The new model Dozer Series M has been developed with the following systems:

- “Body computer”;
- “Diesel Injection”;
- “SCR/DPF after-treatment system”;
- “Instrumentation”.
- The new model Excavator Series CX YANMAR with the “Tier 4 ECU Engine Control Unit” Diesel Injection system has been developed.
- The new model Skid steer Series SR & SV SHIBAURA with the “ECM Engine Control Module” Diesel Injection system has been developed.

CATERPILLAR

- All the diagnostic systems in Dozer model have been updated.
- All the diagnostic systems in the Loader model have been updated.

The following activations have been developed for the M.Y. 2018 and M.Y. 2020 models:

- “DEF (Diesel Exhaust Fluid) dosing system purge test”;
- “DEF (Diesel Exhaust Fluid) dosing system accuracy test”;
- “DEF (Diesel Exhaust Fluid) dosing system verification test”.
- The “DPF (Diesel Particulate Filter) regeneration” adjustment has been developed for the M.Y. 2020 models.

The following activations for the “Vehicle hydraulic management” and “Equipment control module” systems have been developed:

- “Lift cylinder drift check”;
- “Tilt cylinder drift check”;
- “Lift linkage raise cycle time check”;
- “Lift linkage lower cycle time check”;
- “Lift linkage float cycle time check”;
- “Tilt linkage rackback cycle time check”;
- “Tilt linkage dump cycle time check”.

OHW TECHNICAL
DATA SHEETS

Coverage of Makes

Link

The following adjustments for the “Vehicle hydraulic management” and “Equipment control module” systems have been developed:

- “Calibration: lift lever”;
- “Calibration: tilt lever”;
- “Calibration: lift linkage sensor”;
- “Calibration: tilt linkage sensor”;
- “Calibration: implement raise valve 1”;
- “Calibration: implement lower valve 1”;
- “Calibration: third function lever rearward valve”;
- “Calibration: third function lever forward valve”;
- “Calibration: brake/decelerator pedal”;
- “Calibration: implement raise valve (maximum current)”;
- “Calibration: drive pump pressure override”.

The following adjustments for the “Diesel Injection” system have been developed:

- “Reset: Oxidation catalyst replacement”;
- “Reset: Rail pressure sensor replacement”;
- “Reset: Rail pressure valve learning”;
- “Reset: EGR valve learning”;
- “Calibration: Fuel pump learning”.
- The “Vehicle hydraulic management” hydraulic management system has been updated for the Skid steer model.

CUMMINS Engine

The following adjustments for the “Cummins J1939 Core 2 - Proprietary protocol” Diesel Injection system have been developed:

- “Injector coding”;
- “Idle shutdown - Time before shutdown”;
- “Idle shutdown - Engine load threshold”.
- New variants for 12-cylinder engines for the “Cummins J1939 Core 2 – Proprietary protocol” Diesel Injection system have been developed.
- New parameterisations for 12-cylinder Cummins QSB engines for the “Cummins J1939 Core 2 - Proprietary protocol” Diesel Injection system have been developed.

AGRICULTURAL
VEHICLESCONSTRUCTION
VEHICLES &
SPECIAL VEHICLESFORKLIFTS &
TELEHANDLERS

DEUTZ Engine

- The Diesel Injection system “Bosch EMR4 EDC 17” has been updated.

The following activations for the “Bosch EMR4 EDC 17” Diesel Injection system have been developed:

- “Burner test”;
- “Air pump test”;
- “Pipe venting”.

The following adjustments for the “Bosch EMR4 EDC 17” Diesel Injection system have been developed:

- “DPF (Diesel Particulate Filter) service regeneration”;
- “DPF (Diesel Particulate Filter) regeneration”.
- The Diesel Injection system “Bosch EMR3 EDC 16” has been updated.
- The new model Stage V with the “Bosch MD1” Diesel Injection system has been developed.

DITCH WITCH

The “Diesel Injection” systems have been developed for the following new models:

- CUMMINS Horizontal drills;
- DEUTZ Horizontal drills;
- KUBOTA Horizontal drills.

DOOSAN

The new model Loader Series DL DOOSAN has been developed with the following systems:

- “Bosch EDC 17 CV 41”;
- “Bosch EDC 7”.

The “Diesel Injection”, “Engine-vehicle adjustment” and “SCR/DPF after-treatment” systems have been updated for the following models:

- CUMMINS Excavator Series DX;
- DOOSAN Excavator Series DX;
- PERKINS Excavator Series DX;
- SCANIA Excavator Series DX;
- YANMAR Excavator Series DX;
- DOOSAN Mini excavator Series DX;
- YANMAR Mini excavator Series DX.

DYNAPAC

The “Diesel Injection” and “SCR/DPF after-treatment” systems have been developed for the following new models:

- CUMMINS Road rollers;
- DEUTZ Road rollers;
- KUBOTA Road rollers.

FPT Engine

- The “Bosch EDC 17 C 49” Diesel Injection system has been updated.
- The “Bosch Denoxtronic 2 Pump module replacement - Data transfer with cable T71” SCR/DPF after-treatment system has been updated.

GEHL

- The “Diesel Injection” system has been developed for the new models:
- DEUTZ Loader;
- YANMAR Loader;
- Excavator Compact;
- DEUTZ Skid steer;
- YANMAR Skid steer.

HAMM

- The new model Compactor Series HD KUBOTA with the “ECU Engine Control Unit” Diesel Injection system has been developed.

HIDROMEK

The new model Loader has been developed with the following systems:

- “Diesel Injection”;
- “Engine-vehicle adjustment”;
- “SCR/DPF after-treatment system”.

HITACHI

- The new model Excavator ZX Series 5 YANMAR with the “ECU Engine Control Unit” Diesel Injection system has been developed.

AGRICULTURAL
VEHICLESCONSTRUCTION
VEHICLES &
SPECIAL VEHICLESFORKLIFTS &
TELEHANDLERS**HYUNDAI CE**

- The “Cummins J1939 Core 1 - Proprietary protocol” Diesel Injection system has been updated.
- The “DEF Controller” SCR/DPF after-treatment system has been developed for the models Excavator PERKINS.
- The new model Excavator SCANIA has been developed with the following systems:
 - “Diesel Injection”;
 - “SCR/DPF after-treatment system”.

ISUZU Engine

- The “Tier 4 with DPF ECU Engine control unit” Diesel Injection system has been updated.
- The “Tier 4 without DPF ECU Engine control unit” Diesel Injection system has been updated.
- The “Isuzu SCR Exhaust gas treatment” SCR/DPF after-treatment system has been updated.

JCB

- The “Delphi DCM 3.3+” Diesel Injection system has been updated.
- The “ECM Electronic Control Module” Diesel Injection system has been updated.

JOHN DEERE CE

The new model Excavator Series G ISUZU Tier 4 has been developed with the following systems:

- “Multifunction display”;
- “Diesel Injection”;
- “Engine-vehicle adjustment”;
- “Instrumentation”.

The new model Skid Steer JOHN DEERE has been developed with the following systems:

- “Gateway”;
- “Hydraulic management”;
- “Diesel Injection”;
- “Auxiliary control unit”;
- “Indicator and control unit”.

KATO

The “Diesel Injection” system has been developed for the new models:

- CR Series Tier 4 CUMMINS;
- CR Series Tier 4 HINO;

OHW TECHNICAL
DATA SHEETS

Coverage of Makes

Link

- KA Series;
- NK Series;
- SR Series.

KIOTI

The “Diesel Injection” and “SCR/DPF after-treatment” systems have been developed for the following new models:

- NX Series DAEDONG;
- PX Series DOOSAN;
- PX Series PERKINS.

KUBOTA

• The “Injector coding” adjustment has been updated for the models Skid steer Series RT and Skid steer Series SVL”.

KOBELCO

- The “Denso Common Rail Tier 4 CAN line diagnosis” Diesel Injection system has been updated.
- The Diesel Injection system “Denso Common Rail Tie 4 / Stage V” has been updated.
- The “Bosch Denoxtronic 2 Pump module replacement - Data transfer with cable T71” SCR/DPF after-treatment system has been developed.

LIEBHERR

The “Diesel Injection” systems have been developed for the following new models:

- JOHN DEERE Loader;
- LIEBHERR Loader;
- LIEBHERR Dozer;
- LIEBHERR Excavator;
- DEUTZ Telehandler.

LINK-BELT

The new model HTC Series has been developed with the following systems:

- “ABS”;
- “Automatic transmission”;
- “Diesel Injection”.

[AGRICULTURAL
VEHICLES](#)[CONSTRUCTION
VEHICLES &
SPECIAL VEHICLES](#)[FORKLIFTS &
TELEHANDLERS](#)

MERLO

The “Diesel Injection” systems have been developed for the following new models:

- DEUTZ Concrete-mixer DBM Series;
- PERKINS Concrete-mixer DBM Series.

MOW

The new model with FPT engine has been developed with the following systems:

- “ABS”;
- “Automatic transmission”;
- “Diesel Injection”.

MUSTANG by MANITOU

- The new model Skid steer with the “Tier 4 ECU Engine Control Unit” Diesel Injection system has been developed.

NEW HOLLAND

All the NEW HOLLAND diagnostic systems in the following models have been updated:

- Skid steer 200 Series;
- Backhoe B Series;
- Backhoes U80C.

The Diesel Injection s

ystem “Bosch EDC 17 CV 41” in the following models has been updated:

- Backhoe B Series;
- Backhoes U80C.

The Diesel Injection system “Bosch EDC 17 CV 49” in the following models has been updated:

- Skid steer 200 Series;
- Backhoe B Series;
- Backhoes U80C.

PERKINS Engine

The following adjustments for the “Diesel Injection” system have been developed:

- “Reset: Oxidation catalyst replacement”;
- “Reset: Rail pressure sensor replacement”;

[OHW TECHNICAL
DATA SHEETS](#)[Coverage of Makes](#)[Link](#)

- “Reset: Rail pressure valve learning”;
- “Reset: EGR valve learning”;
- “Calibration: Fuel pump learning”.

PRINOTH

The following systems have been developed for the new model Leitwolf MTU Tier 4 Final:

- “ACM Exhaust gas after-treatment”;
- “ADM 3 Adaptation module”;
- “CPC Powertrain Controller”;
- “MCM Engine management”.

SENNEBOGEN

The “Diesel Injection” system has been developed for the new models:

- Crane truck;
- Excavator.

SPIERINGS

The “ABS”, “Automatic transmission”, “Crane Engine Management”, “Diesel Injection”, “Tyre pressure”, “Retarder” and SCR/DPF after-treatment” systems have been developed for the following new models:

- SK 1265 AT6;
- SK 2400 AT7;
- SK 2418 R;
- SK 365 AT3;
- SK 375 AT3;
- SK 377 AT3;
- SK 387 AT3;
- SK 488 AT4;
- SK 498 AT4;
- SK 597 AT4;
- SK 599 AT5.

TADANO

The “ABS”, “Automatic transmission”, “Gateway”, “Crane Engine Management”, “Diesel Injection”, “Engine-vehicle adjustment”, “Retarder” and SCR/DPF aftertreatment” systems have been developed for the following new

[AGRICULTURAL
VEHICLES](#)[CONSTRUCTION
VEHICLES &
SPECIAL VEHICLES](#)[FORKLIFTS &
TELEHANDLERS](#)

models:

- ATF Series;
- GR Series;
- GT Series;
- GTC Series.

VERMEER

The "Diesel Injection" system has been developed for the new models:

- CATERPILLAR Horizontal drills;
- DEUTZ Horizontal drills;
- JOHN DEERE Horizontal drills;
- KOHLER Horizontal drills;
- KUBOTA Horizontal drills.

VOLVO CE

- All the diagnostic systems for the M.Y. 2020 vehicles have been updated.
- The "Automatic transmission", "OEM Vehicle Check-Up", "GPS", "Diesel Injection", "Engine-vehicle adjustment", "SCR/DPF after-treatment" and "Instrumentation" systems have been developed for the following new models:
 - Compact Loader 5.5 t - 9.5 t Tier 4 Final;
 - Cold planer Tier 3 / Tier 4 Interim;
 - Cold planer Tier 4 Final;
 - Mini excavator 1.6 t - 9.9 t Tier 4 Final;
 - Motor graders Tier 4 Final;
 - Road rollers Tier 4 Final.

The following activations have been developed for the models Loader 11 t - 56 t Tier 3 / Tier 4 Interim and Excavator 13.1 t - 94 t Tier 3 / Tier 4 Interim:

- "Burner test";
- "Fuel pressure test";
- "Fuel system bleeding test";
- "Air pump test".

[OHW TECHNICAL
DATA SHEETS](#)[Coverage of Makes](#)[Link](#)

The following adjustments have been developed for the models Loader 11 t - 56 t Tier 3 / Tier 4 Interim and Excavator 13.1 t - 94 t Tier 3 / Tier 4 Interim:

- "EGR valve calibration";
- "NOx sensor reset".

WACKER NEUSON

• The new model Road rollers KUBOTA with the "ECU Engine Control Unit" Diesel Injection system has been developed.

WIRTGEN

- The "Diesel Injection" system has been developed for the new models:
- Planer;
- Scraper;
- Recycler and Stabilizer.

YANMAR

• The new model Loader YANMAR with the "Tier 4 Final ECU Engine Control Unit" Diesel Injection system has been developed.

AGRICULTURAL
VEHICLESCONSTRUCTION
VEHICLES &
SPECIAL VEHICLESFORKLIFTS &
TELEHANDLERS

FORKLIFTS & TELEHANDLERS

BOBCAT

The new model Telehandler Series T / TL / TR DOOSAN has been developed with the following systems:

- "Diesel Injection";
- "SCR/DPF after-treatment system".

CASE IH

The new model Loader Series Farmlift has been developed with the following systems:

- "Diesel Injection";
- "SCR/DPF after-treatment system".

CASE CE

The new model Forklift has been developed with the following systems:

- "Gateway";
- "Diesel Injection".

CLAAS

- All the diagnostic systems in the model Scopion Series have been updated.

CUMMINS Engine

The following adjustments for the "Cummins J1939 Core 2 - Proprietary protocol" Diesel Injection system have been developed:

- "Injector coding";
- "Idle shutdown - Time before shutdown";
- "Idle shutdown - Engine load threshold".
- New variants for 12-cylinder engines for the "Cummins J1939 Core 2 - Proprietary protocol" Diesel Injection system have been developed.
- New parameterisations for 12-cylinder Cummins QSB engines for the "Cummins J1939 Core 2 - Proprietary protocol" Diesel Injection system have been developed.

DEUTZ Motore

- The Diesel Injection system "Bosch EMR4 EDC 17" has been updated.

OHW TECHNICAL
DATA SHEETS

Coverage of Makes

Link

The following activations for the “Bosch EMR4 EDC 17” Diesel Injection system have been developed:

- “Burner test”;
- “Air pump test”;
- “Pipe venting”.

The following adjustments for the “Bosch EMR4 EDC 17” Diesel Injection system have been developed:

- “DPF (Diesel Particulate Filter) service regeneration”;
- “DPF (Diesel Particulate Filter) regeneration”.
- The Diesel Injection system “Bosch EMR3 EDC 16” has been updated.
- The new model Stage V with the “Bosch MD1” Diesel Injection system has been developed.

GEHL

The “Diesel Injection” system has been developed for the new models:

- CUMMINS Telehandler;
- JOHN DEERE Telehandler.

GIANT

- The new model Telehandler with the “ECU Engine Control Unit” Diesel Injection system has been developed.

HYSTER

- The new model Reach Stackers with the “Cummins J1939 Core 2 – Proprietary protocol” Diesel Injection system has been developed.

JOHN DEERE CE

- The new model Telehandler with the “Tier 2 / Tier 3 ECU Engine Control Unit” Diesel Injection system has been developed.

MASSEY FERGUSON

The new model Loader Series LH has been developed with the following systems:

- “Diesel Injection”;
- “SCR/DPF after-treatment system”.

AGRICULTURAL
VEHICLESCONSTRUCTION
VEHICLES &
SPECIAL VEHICLESFORKLIFTS &
TELEHANDLERS**MERLO**

The "Hydraulic management", "Diesel Injection" and "SCR/DPF after-treatment" systems have been developed for the following new models:

- Telehandler MF MULTIFARMER Series;
- Telehandler P Panoramic Series;
- Telehandler ROTO Series;
- Telehandler TF TURBOFARMER Series.

SENNEBOGEN

• The new model Telehandler with the "Bosch EDC 17 CV 41" Diesel Injection system has been developed.

UPLIFTING

The new model Reach Stackers has been developed with the following systems:

- "ACM Exhaust gas after-treatment";
- "ECU Engine Control Unit";
- "Automatic transmission".

XTREME

The "Diesel Injection" system has been developed for the new models:

- CUMMINS Telehandler Series XR;
- DEUTZ Telehandler Series XR.

WIRING DIAGRAMS

ATLAS COPCO

The following diagrams have been developed for the model CUMMINS Dumper:

- Automatic transmission;
- Diesel Injection.

The following diagram has been developed for the model CUMMINS Road rollers:

- Diesel Injection.

The following diagram has been developed for the model DEUTZ Road rollers:

- Diesel Injection.

The following diagrams have been developed for the model KUBOTA Road rollers:

- Diesel Injection;
- SCR/DPF aftertreatment system.

BOBCAT

The following diagram has been developed for the model Excavator Series E:

- Diesel Injection.

CLAAS

The following diagram has been developed for the model Arion Series 600:

- Automatic transmission.

DEUTZ

The following diagram has been developed for the engines TCD 2.9L, TCD 3.6L e TCD 4.1L:

- Diesel Injection.

DOOSAN

The following diagram has been developed for the model Excavator Series DX:

- Diesel Injection.

DYNAPAC

The following diagram has been developed for the model CUMMINS Road rollers:

- Diesel Injection.

The following diagram has been developed for the model DEUTZ Road rollers:

- Diesel Injection.

The following diagrams have been developed for the model KUBOTA Road rollers:

- Diesel Injection;
- SCR/DPF aftertreatment system.

FENDT

The following diagram has been developed for the model Vario Series 300:

- Diesel Injection.

The following diagram has been developed for the model Combine harvester Series C / L / P / X:

- Diesel Injection.

GEHL

The following diagram has been developed for the model JOHN DEERE Telehandler:

- Diesel Injection.

JCB

The following diagram has been developed for the model Fastrac Series 3000:

- Diesel Injection.

The following diagram has been developed for the model Fastrac Series 4000:

- Diesel Injection.

The following diagram has been developed for the model Fastrac Series 8000:

- Diesel Injection.

JOHN DEERE CE

• The "Diesel Injection" wiring diagram has been developed for the following models:

- Loader H Series;

- Loader J Series;
- Loader K Series;
- Loader L Series;
- Loader WL Series;
- Bulldozer;
- Dumper;
- Excavator D Series;
- Excavator G Series;
- Skid steers;
- Graders;
- Telehandlers;
- Backhoe G Series;
- Backhoe J Series;
- Backhoe K Series;
- Backhoe L series.

JOHN DEERE and JOHN DEERE (Brazil)

The following diagram has been developed for the models Series 6M and Series 6MC:

- Diesel Injection.

KALMAR

The following diagram has been developed for the model Series TR:

- Diesel Injection.

KUBOTA

The following diagrams have been developed for all the models:

- Diesel Injection;
- SCR/DPF aftertreatment system.

The following diagrams have been developed for the model Series M7000:

- Automatic transmission;
- Accessory function control unit;
- Gateway;
- Diesel Injection;

- SCR/DPF aftertreatment system;
- Instrumentation.

LANDINI

The following diagram has been developed for the model Series 5H:

- Diesel Injection.

LIEBHERR

The following diagram has been developed for the model Loader:

- Diesel Injection.

The following diagram has been developed for the model Dozer:

- Diesel Injection.

The following diagram has been developed for the model Excavator:

- Diesel Injection.

MASSEY FERGUSON and MASSEY FERGUSON (LATAM)

• The “Diesel Injection” wiring diagram has been developed for the following models:

- 42xx Series;
- 47xx Series;
- 56xx Series;
- 57xx Series;
- 66/76/77xx Series;
- 67xx Series;
- 72xx Series;
- 76/77xx Series;
- 86/87xx Series;
- Swather WR Series;
- Combine harvester 9895 Series;
- Combine harvester ACTIVA Series;
- Combine harvester BETA Series;
- Combine harvester CENTORA Series;
- Combine harvester DELTA Series;

- Self-propelled sprayer.

MERLO

The following diagram has been developed for the model Telehandler Series EP Panoramic:

- Diesel Injection.

MOW

The following diagram has been developed for the model with FPT engines:

- Diesel Injection.

MTU

The following diagram has been developed for the models Tier 4:

- Diesel Injection.

PERKINS

The following diagram has been developed for the models Tier 4:

- Diesel Injection.

RENAULT AGRICULTURE

The following diagrams have been developed for the model Ares Series 500:

- Suspended Axle;
- Automatic transmission;
- Diesel Injection;
- Rear Hydraulic Linkage.

The following diagrams have been developed for the model Ares Series 800:

- Suspended Axle;
- Automatic transmission;
- Diesel Injection;
- Rear Hydraulic Linkage.

The following diagrams have been developed for the model Celtis Series 400:

- Diesel Injection;
- Rear Hydraulic Linkage.

VALTRA and VALTRA (LATAM)

The “Diesel Injection” wiring diagram has been developed for the following models:

- A Series;
- N Series;
- T Series;
- S Series;
- BH Series;
- Axx4 Series;
- Self-propelled sprayer.

VM Engine

The following diagram has been developed for all the models with VM engines:

- Diesel Injection.

VOLVO CE

The following diagrams have been developed for the model Loader Tier 3 / Tier 4:

- Automatic transmission;
- Diesel Injection.

YANMAR Engine

The following diagram has been developed for the models with 4TNV Tier 4 engines:

- Diesel Injection.

CONSULTING A WIRING DIAGRAM

The interaction (diagnosis link) with the wiring diagrams has been improved and new technical sheets have been associated in the following models:

ATLAS COPCO

- CUMMINS Dumper;
- CUMMINS Road rollers;
- DEUTZ Road rollers;
- KUBOTA Road rollers.

BOBCAT

- Excavator E Series.

CLAAS

- Arion 600 Series.

DOOSAN

- Excavator Series DX.

DYNAPAC

- CUMMINS Road rollers;
- DEUTZ Road rollers;
- KUBOTA Road rollers.

FENDT

- Vario 300 Series;
- Combine harvester C / L / P / X Series.

GEHL

- JOHN DEERE Telehandler.

JCB

- Fastrac 3000 Series;
- Fastrac 4000 Series;
- Fastrac 8000 Series.

JOHN DEERE and JOHN DEERE (Brazil)

- 6M Series;
- 6MC Series.

JOHN DEERE CE

- Loader H Series;
- Loader J Series;
- Loader K Series;
- Loader L Series;
- Loader WL Series;
- Bulldozer;
- Dumper;
- Excavator D Series;
- Excavator G Series;
- Skid steers;
- Graders;
- Telehandlers;
- Backhoe G Series;
- Backhoe J Series;
- Backhoe K Series;
- Backhoe L series.

KALMAR

- TR Series.

KUBOTA

- M7000 Series.

LANDINI

- 5H Series.

LIEBHERR

- Loader;
- Bulldozer;
- Excavator.

MASSEY FERGUSON**and MASSEY FERGUSON (LATAM)**

- 42xx Series;
- 47xx Series;
- 56xx Series;
- 57xx Series;
- 66/76/77xx Series;
- 67xx Series;
- 72xx Series;
- 76/77xx Series;
- 86/87xx Series;
- Swather WR Series;
- Combine harvester 9895 Series;
- Combine harvester ACTIVA Series;
- Combine harvester BETA Series;
- Combine harvester CENTORA Series;
- Combine harvester DELTA Series;
- Self-propelled sprayer.

MERLO

- Telehandler P Panoramic Series.

MOW

- FPT.

RENAULT AGRICULTURE

- Ares 500 Series;
- Ares 800 Series;
- Celtis 400 Series.

VALTRA and VALTRA (LATAM)

- A Series;
- N Series;
- T Series;
- S Series;
- BH Series;
- Axx4 Series;
- Self-propelled sprayer.

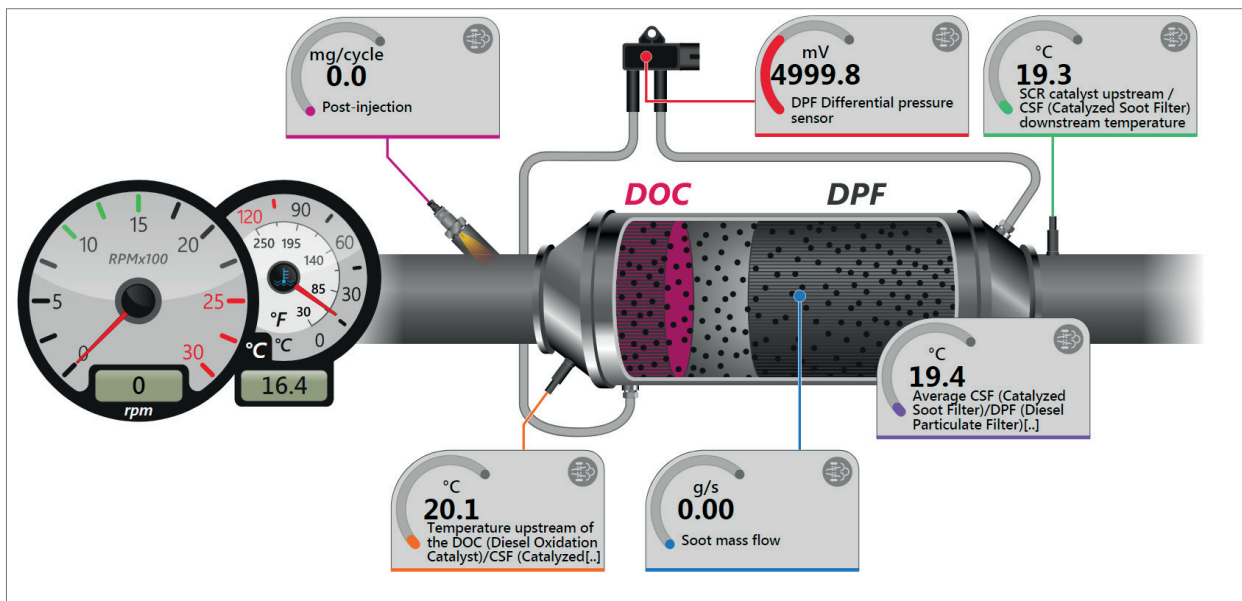
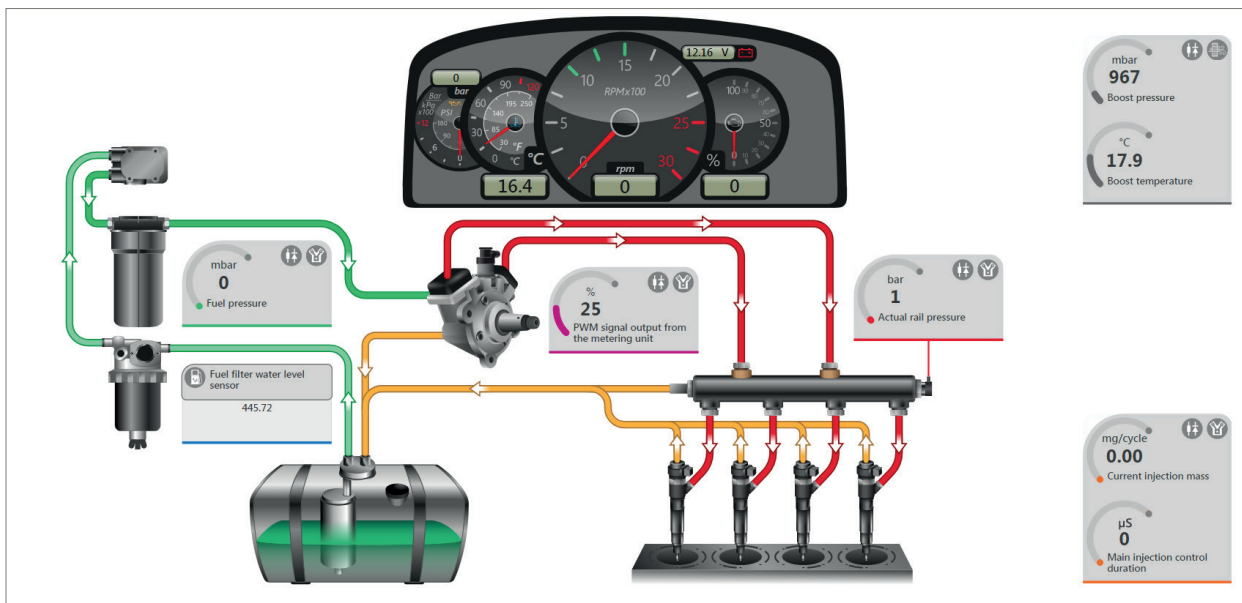
VOLVO CE

- Loader Tier 3 / Tier 4 interim.

DASHBOARD

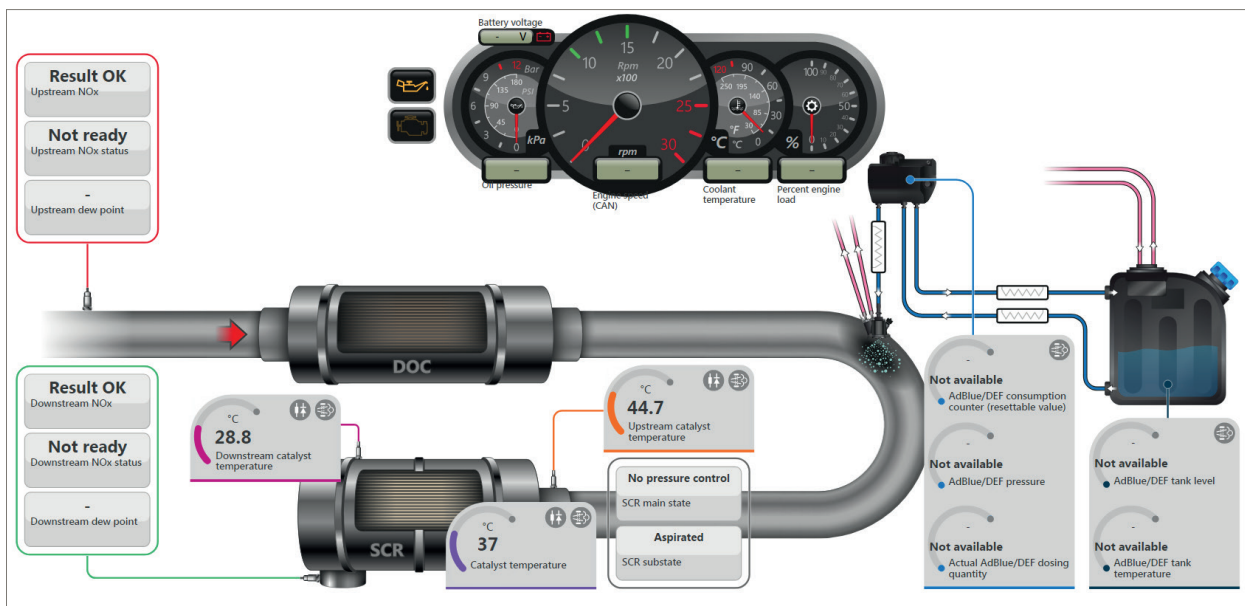
DEUTZ Engine

- The parameter dashboards have been updated for all the vehicles with the “Bosch EMR4 EDC 17” Diesel Injection system.
- The parameter procedures have been updated for all the vehicles with the “Bosch EMR4 EDC 17” Diesel Injection system.



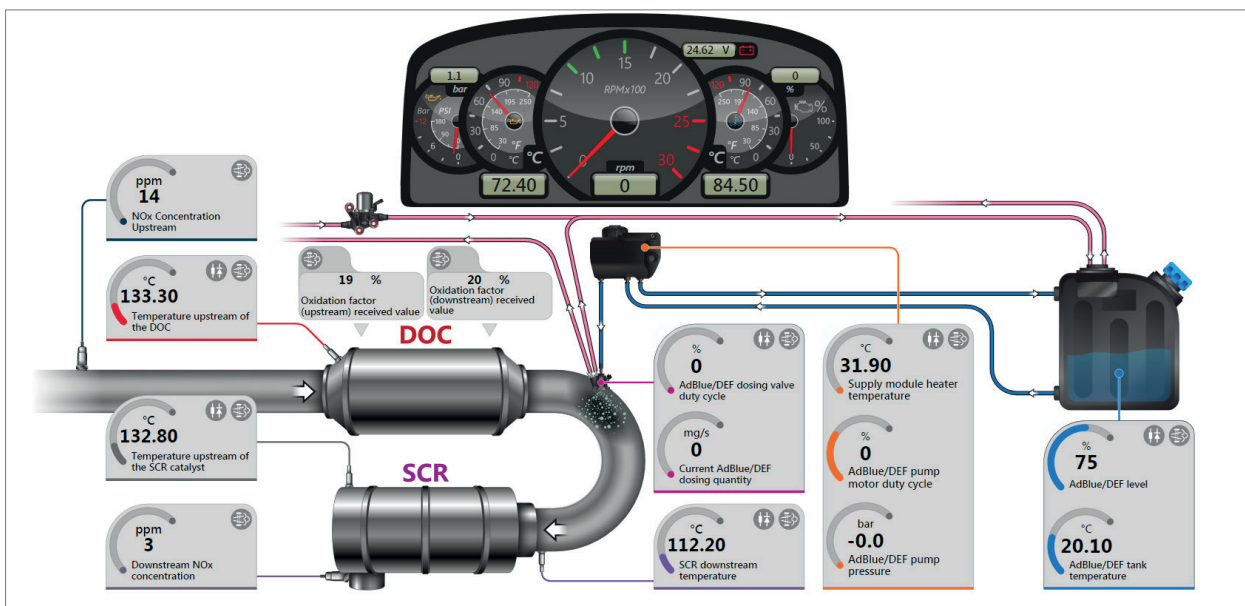
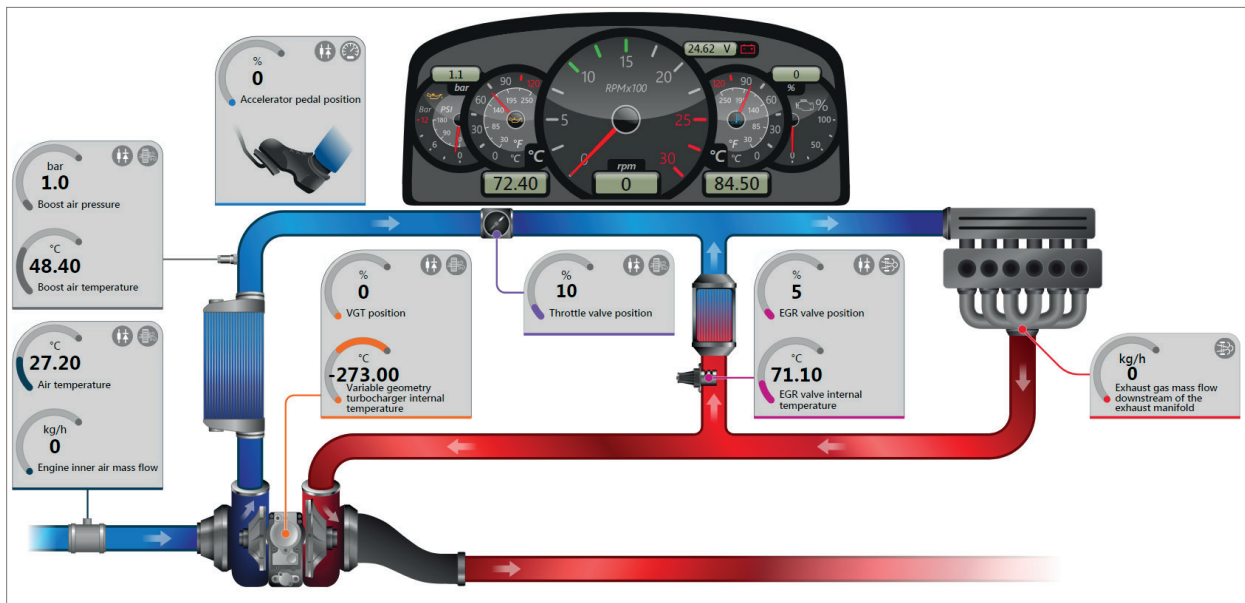
SISU Engine

- The parameter dashboards have been updated for all the vehicles with the “EEM4 Engine control unit” Diesel Injection system.



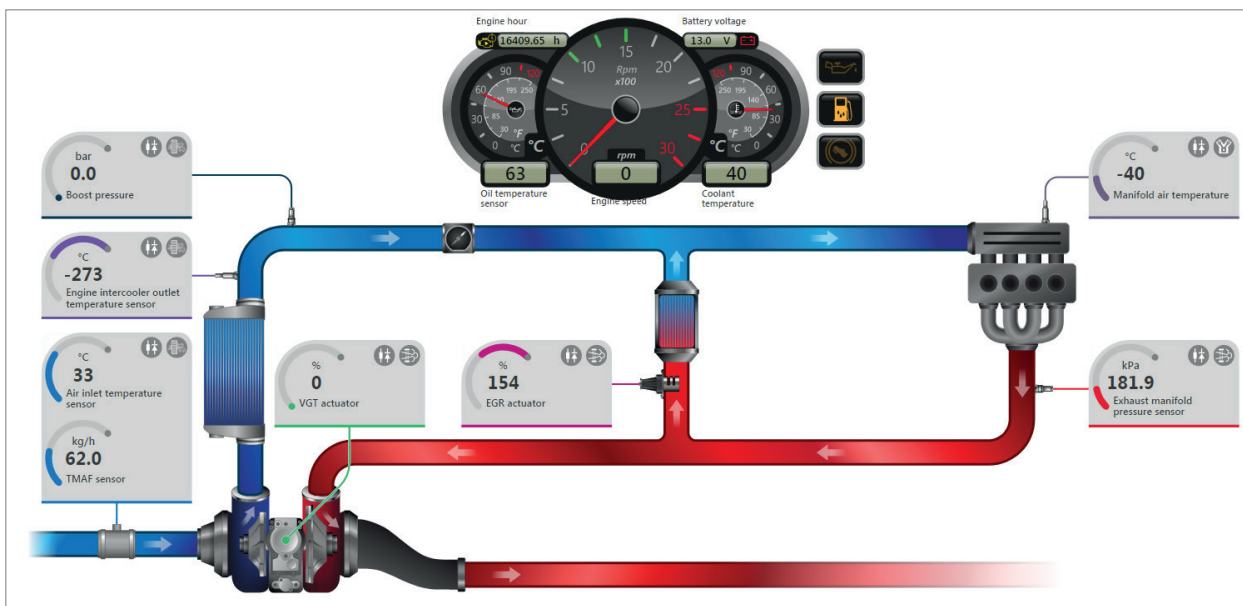
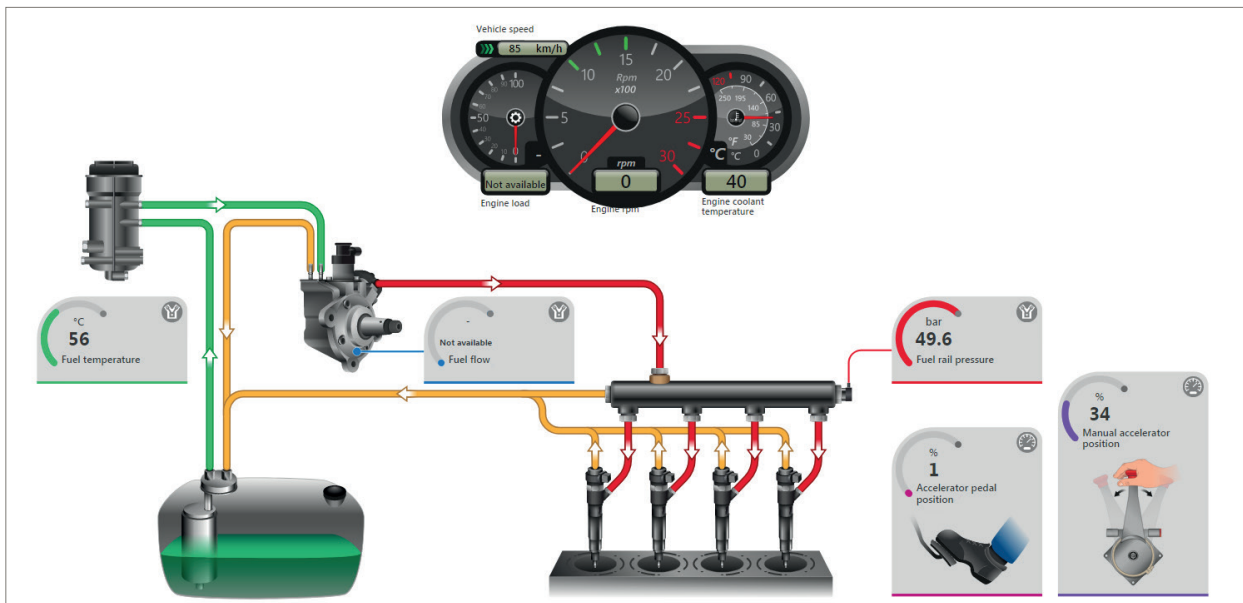
DOOSAN

• The parameter dashboards have been updated for the models Loader Series DL and Excavator Series DX with the “Bosch EDC 17 CV 41” Diesel Injection system.



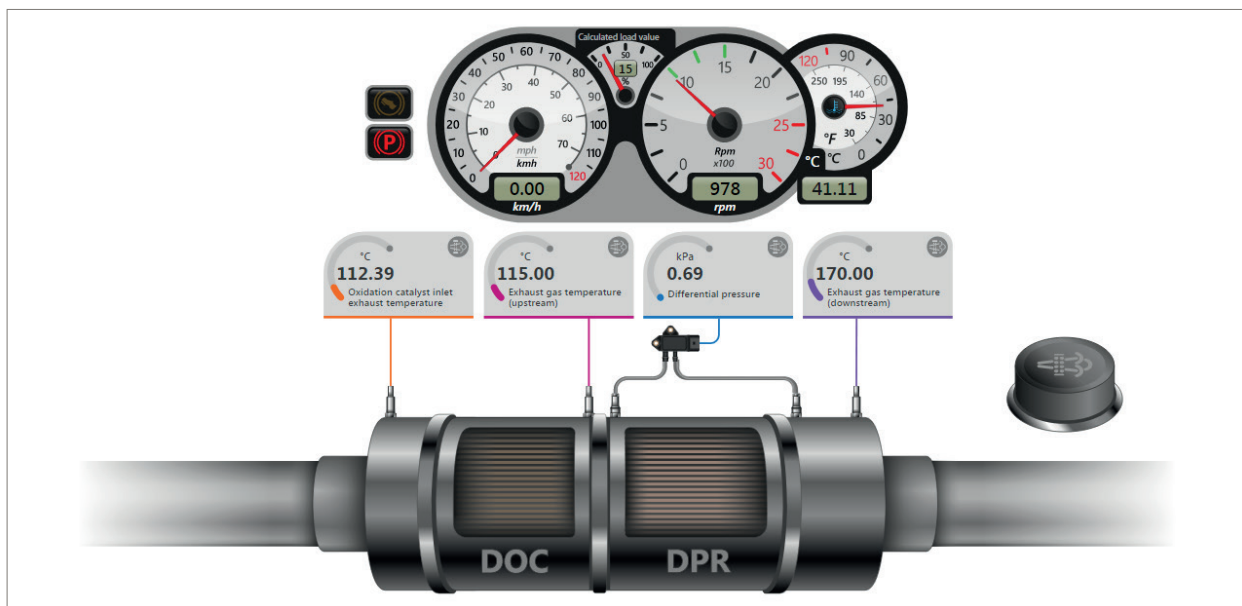
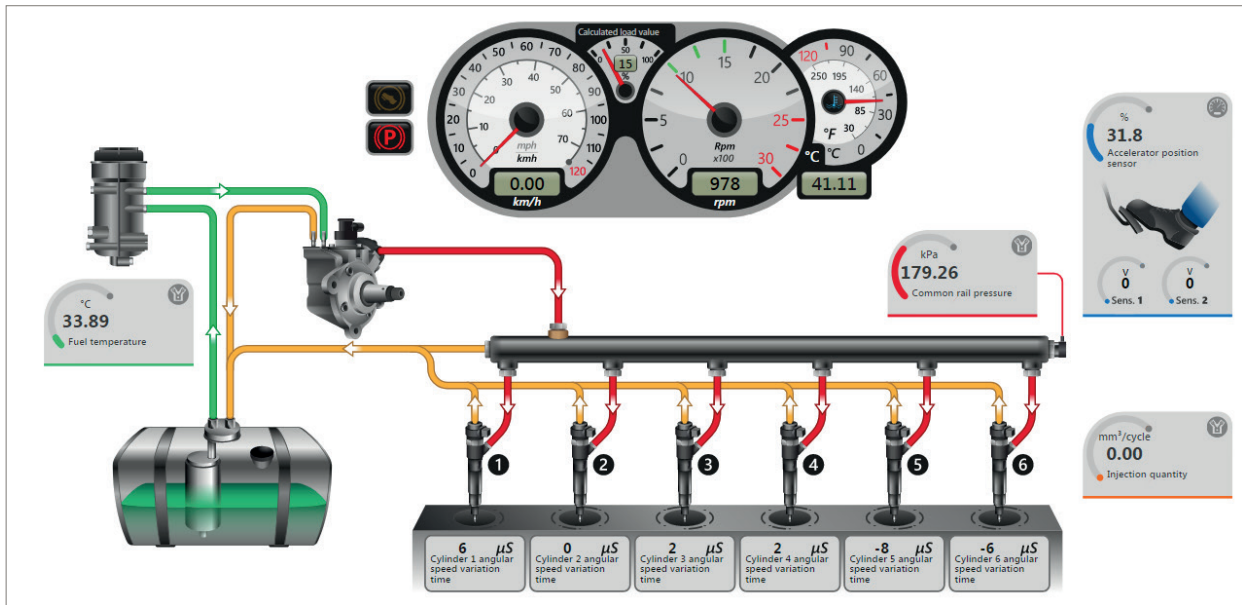
JCB

- The parameter dashboards have been updated for all the vehicles with the “ECM Electronic Control Module” Diesel Injection system.
- The parameter dashboards have been updated for all the vehicles with the “DCM 3.3+ Tier 4” Diesel Injection system.



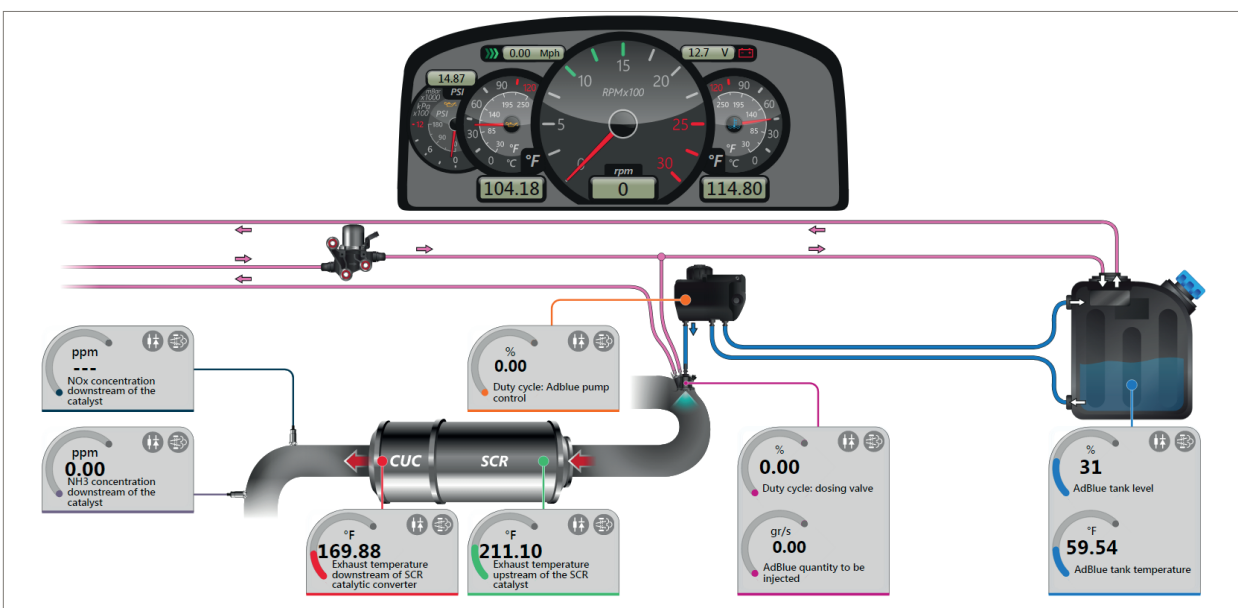
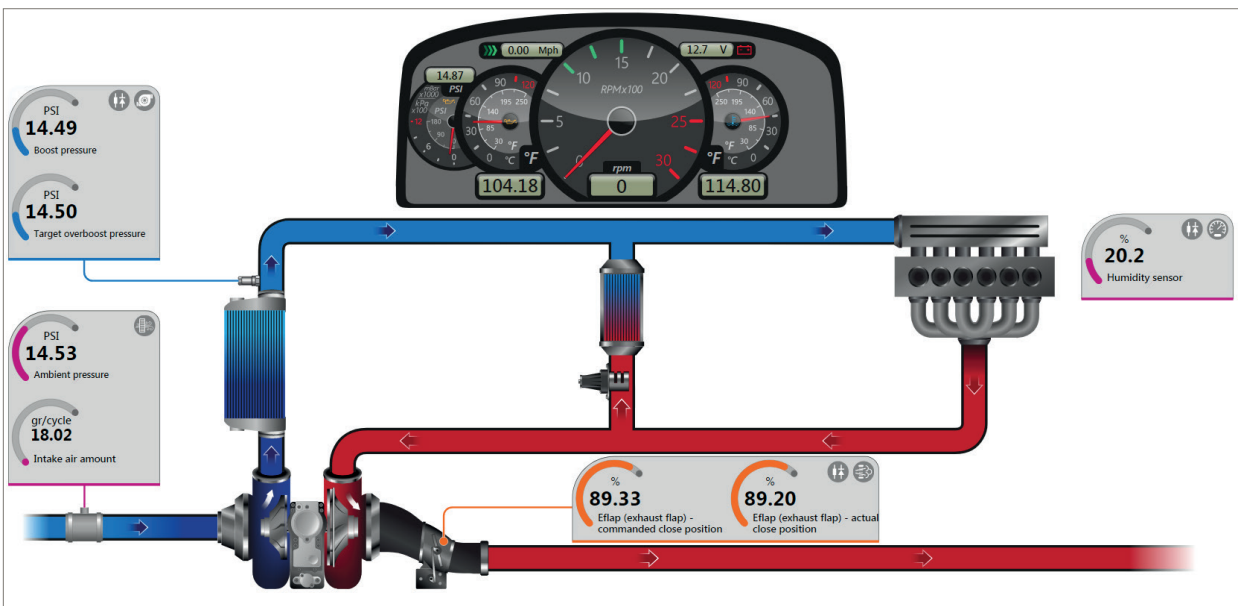
HINO Engine

- The parameter dashboards have been updated for all the vehicles with the “Denso Common Rail” Diesel Injection system.



FPT Engine

- The parameter dashboards have been updated for all the vehicles with the “Bosch EDC 17 CV 41” Diesel Injection system.



OHW TECHNICAL DATA SHEETS

CASE IH

New sheets have been developed for the following engines:

- FPT F3H FE613 - Tier 4 Final;
- FPT F3B FE613 - Tier 4 Final;
- FPT F3B FE613 - Tier 4 interim;
- FPT F5C E5454 – Tier 3;
- FPT F5C E9454 – Tier 3;
- FPT F5C E9484 – Tier 3;
- 7, 5 L (675/TH) [1998 - 2008];
- 7, 5 L (675/WS) [1998 - 2008];
- 7, 5 L (675/WT) [1998 - 2008];
- 7, 5 L (675/WV) [1998 - 2008];
- 7, 5 L (675/WW) [1998 - 2008];
- 2,9 L (8035.05) [1999 - 2004].

CLAAS

New sheets have been developed for the following engines:

- 4,5 (F4D FE414A) - Tier 4F;
- 4,5 (F4D FE4136) - Tier 4F;
- 4,5 (F4D FE4137) - Tier 4F;
- 4,5 (F4D FE4138) - Tier 4F;
- 4,5 (F4D FE4139) - Tier 4F;
- 4,5 (F4D FE413F) - Tier 4F;
- 6068H (Level 23) - Tier 4 interim;
- DPS 6068H (Level 14) - Tier 3;
- FPT F5D FL413 - Tier 4 Interim;
- FPT F4D FE617 - Tier 4 Final;
- FPT F5C E5454 – Tier 3.

DEUTZ – FAHR

New sheets have been developed for the following

engines:

- FARMotion 3,8 L4 - Tier 4 Interim;
- FARMotion 3,8 L4 - Tier 4 Final;
- Deutz TCD 3.6 L4 - Tier 4 Interim.

FENDT

New sheets have been developed for the following engines:

- BF6M 2013 - Tier 2;
- MAN D0836 LE - Tier 2;
- Deutz BF4M 2013 - Tier 2.

KUBOTA

New sheets have been developed for the following engines:

- Kubota 3,8 L (V3800-TI) - Tier 4 interim;
- Kubota 3,8 L (V3800-TIE4) - Tier 4 interim;
- Kubota 6,1 L (V6108-TI) - Tier 3;
- Kubota 6,1 L (V6108-TIEF4) - Tier 4 interim;
- Kubota 6,1 L (V6108-TIE3) - Tier 3;
- Kubota 3,3 L (V3307-TE4) - Tier 4 interim;
- Kubota 3,8 L (V3800-TE4) - Tier 4 interim.

MASSEY FERGUSON and MASSEY FERGUSON (LATAM)

New sheets have been developed for the following engines:

- SISU 8,4 L (84 xxxx - 4V) - Tier 4 Final;
- SISU 8,4 L (84 xxxx - 4V) - Tier 3;
- SISU 6,6 L (66 xxxx - 4V) - Tier 4 interim;
- SISU 7,4 L (74 xxxx - 4V) - Tier 4 interim;
- SISU 8,4 L (84 xxxx - 4V) - Tier 4 interim;
- SISU 8,4 L (84 xxxx - 2V) - Tier 2;

- SISU 7,4 L (74 xxxx - 4V) - Tier 3;
- SISU 7,4 L (74 xxxx - 2V) - Tier 3;
- SISU 4,9 L (49 xxxx - 4V) - Tier 3;
- SISU 7,4 L (74 xxxx - 2V) - Tier 2;
- SISU 4,9 L (49 xxxx - 2V) - Tier 3;
- PERKINS 6,6 L (PJ 1106D - 4V) - Tier 3;
- PERKINS 4,4 L (NH 1104D - 4V) - Tier 3.
- PERKINS 4,0 L (AA 1004-4_4V) - Tier 2;
- PERKINS 4,0 L (AB 1004-T_4V) - Tier 2;
- PERKINS 4,0 L (AC 1004-4T_4V) - Tier 2;
- PERKINS 6,0 L (VK 1106C - 2V) - Tier 2;
- PERKINS 4,23 L (AR 1004-42_4V) - Tier 2;
- PERKINS 6,0 L (YA 1006-6 - 2V) - Tier 2.

NEW HOLLAND

New sheets have been developed for the following engines:

- FPT F3H FE613 - Tier 4 Final;
- FPT F3B FE613 - Tier 4 Final;
- FPT F3B FE613 - Tier 4 interim;
- FPT F5C E5454 – Tier 3;
- FPT F5C E9454 – Tier 3;
- FPT F5C E9484 – Tier 3;
- 7, 5 L (675/TH) [1998 - 2008];
- 7, 5 L (675/WS) [1998 - 2008];
- 7, 5 L (675/WT) [1998 - 2008];
- 7, 5 L (675/WV) [1998 - 2008];
- 7, 5 L (675/WW) [1998 - 2008];
- 2,9 L (8035.05) [1999 - 2004].

SAME

New sheets have been developed for the following engines:

- FARMotion 3,8 L4 - Tier 4 Interim;
- FARMotion 3,8 L4 - Tier 4 Final;
- Deutz TCD 3.6 L4 - Tier 4 Interim.

SISU Engine

New sheets have been developed for the following engines:

- SISU 4,9 L (49 xxxx - 2V) - Tier 3;
- SISU 4,9 L (49 xxxx - 4V) - Tier 3;
- SISU 6,6 L (66 xxxx - 4V) - Tier 3;
- SISU 7,4 L (74 xxxx - 4V) - Tier 3.

STEYR

New sheets have been developed for the following engines:

- FPT F3H FE613 - Tier 4 Final;
- FPT F3B FE613 - Tier 4 Final;
- FPT F3B FE613 - Tier 4 interim;
- FPT F5C E5454 – Tier 3;
- FPT F5C E9454 – Tier 3;
- FPT F5C E9484 – Tier 3;
- 7, 5 L (675/TH) [1998 - 2008];
- 7, 5 L (675/WS) [1998 - 2008];
- 7, 5 L (675/WT) [1998 - 2008];
- 7, 5 L (675/WV) [1998 - 2008];
- 7, 5 L (675/WW) [1998 - 2008];
- 2,9 L (8035.05) [1999 - 2004].

YANMAR Motore

New sheets have been developed for the following engines:

- Yanmar 0,9 L3 (3TNV70-xxx) - Tier 4 Interim;
- Yanmar 1,1 L3 (3TNV76-xxxx) - Tier 4 Interim;
- Yanmar 1,3 L3 (3TNV82-xxxx) - Tier 4 Interim;
- Yanmar 1,6 L3 (3TNV88F-xxxx) - Tier 4 Final.

Coverage of Makes

AGRICULTURAL VEHICLES

AGRICULTURE TRAILER
ARBOS
BELARUS
 BUHLER VERSATILE
 CARRARO
CASE iH
CASE iH (LATAM)
CATERPILLAR
CHALLENGER
 CLAAS
 DEUTZ - FAHR
 ENERGREEN
ERO
 FARESin
FENDT
 FRANZ KLEINE
GREGOIRE
 GRIMME
 HOLDER
HOLMER
HORSCH
 HURLIMANN
 JACTO
JCB
 JOHN DEERE
 JOHN DEERE (Brazil)
 KAMAZ
KIOTI
 KRONE
 KUBOTA
 LAMBORGHINI
LANDINI
 LAVERDA
 LINDNER
LS MTRON
 MAC DON
MASSEY FERGUSON
 MASSEY FERGUSON (LATAM)
 McCORMICK
MERLO

NEW HOLLAND
 NEW HOLLAND (LATAM)
 RENAULT AGRICULTURE
 ROPA
ROSTSELMASH
 SAME
 STARA
 STEYR
 URSUS
VALTRA
VALTRA (LATAM)
 VOLENTIERI PELLENC

CONSTRUCTION

AEBI
ASTRA
 ATLAS
 ATLAS COPCO
 BELL
 BOBCAT
 BOMAG
 CARRARO
CASE CE
CASE CE (LATAM)
 CATERPILLAR
 CVS FERRARI
DITCH WITCH
 DOOSAN
DYNAPAC
ELAZ
 FANTUZZI
 FIAT-KOBELCO
GEHL
 GENIE
 GROVE
 HAMM
 HIDROMEK
HITACHI
 HYDREMA
HYUNDAI CE
 ITURRI
 JCB

JLG
 JOHN DEERE CE
 KALMAR
 KÄSSBOHRER
 GELÄNDEFahrZEUG
KATO
 KAWASAKI CE
 KOBELCO
 KOMATSU
 KRAMER
 KUBOTA
 LIEBHERR
 LINK-BELT
 MECALAC
 MERLO
 MOW
MUSTANG by MANITOU
 NEW HOLLAND
 O&K
 OSHKOSH
 PERLINI
 PRINOTH
 RANDON
 ROSENBAUER
 SANDVIK
SENNEBOGEN
SPIERINGS
 SUNWARD
 TADANO
 TAKEUCHI
 TERBERG
 TEREX
 TEREX/DEMAG
 TEREX/MECALAC
 THWAITES
 TIGERCAT
VERMEER
 VOLVO CE
WACKER NEUSON
 WEIDEMANN
 WIRTGEN
 XCMG
YANMAR

LEGEND

- Brands that **offer** updates in this version
- Brands that do **not offer** updates in this version

FORKLIFTS & TELEHANDLERS

BOBCAT
CASE CE
CASE iH
 CATERPILLAR
 CLAAS
 COMETTO
 DIECI
 DOOSAN
 FARESIN
GEHL
 GENIE
GIANT
 HELI
 HYSTER
 HYUNDAI
 JCB
JLG
JOHN DEERE CE
 KALMAR
 KONECRANES
 KRAMER
 KUBOTA
LIEBHERR
 LINDE
 MANITOU
 MASSEY FERGUSON
 MERLO
 NEW HOLLAND
 OTO
 PETTIBONE
SENNEBOGEN
UPLIFTING
WACKER NEUSON
 WEIDEMANN
 XTREME
 YALE

INDUSTRIAL ENGINES

CATERPILLAR
 CUMMINS
 DETROIT
 DEUTZ
 DOOSAN
 FPT (IVECO MOTORS)
 ISUZU
JCB
JOHN DEERE
 KOHLER
 KUBOTA
 MAN
 MERCEDES-BENZ
 MTU
 MWM
 PERKINS
 SCANIA
 SISU
 VECTOR
VM MOTORI
VOLVO PENTA
 YANMAR

TRAIN

CATERPILLAR
 CUMMINS
DEUTZ
FPT
 MAN
 MERCEDES-BENZ
 MTU
 VECTOR

LEGEND

- Brands that **offer** updates in this version
- Brands that do **not offer** updates in this version

OHW TECHNICAL
DATA SHEETS

Coverage of Makes

Link

Link

To check out the extensive coverage of TEXA products, go to:

www.texa.com/coverage



To check on IDC5 compatibility and minimum system requirements, go to:

www.texa.com/system



IMPORTANT NOTICE

Starting from February 2021, the new IDC5 software versions will no longer support the AXONE 4 tools with a serial number that starts by DA8.

For further information contact your official TEXA distributor.

WARNING

The trademarks and logos of vehicle manufacturers in this document have been used exclusively for information purposes and are used to clarify the compatibility of TEXA products with the models of vehicles identified by the trademarks and logos. Because TEXA products and software are subject to continuous developments and updates, upon reading this document they may not be able to carry out the DIAGNOSTICS of all the models and electronic systems of each vehicle manufacturer mentioned within this document. References to the makes, models and electronic systems within this document must therefore be considered purely indicative and TEXA recommends to always check the list of the "Systems that can be diagnosed" of the product and/or software at TEXA authorized retailers before any purchase. **The images and the vehicle outlines within this document have been included for the sole purpose of making it easier to identify the vehicle category (car, truck, motorbike, etc.) for which the TEXA product and/or software is intended.** The data, descriptions and illustrations may change compared to those described in this document. TEXA S.p.A. reserves the right to make changes to its products without prior notice.



Copyright TEXA S.p.A.

09/2020 - Inglese



TEXA S.p.A.
Via 1 Maggio, 9
31050 Monastier di Treviso
Treviso - ITALY
Tel. +39 0422 791311
Fax +39 0422 791300
www.texa.com - info.it@texa.com

**COMPANY WITH
QUALITY SYSTEM
CERTIFIED BY DNV GL
= ISO 9001 =**